

Northern Lights  
Distribution

Sample 616-072425-611

Super Silver Haze

Batch/Lot # SSH18261

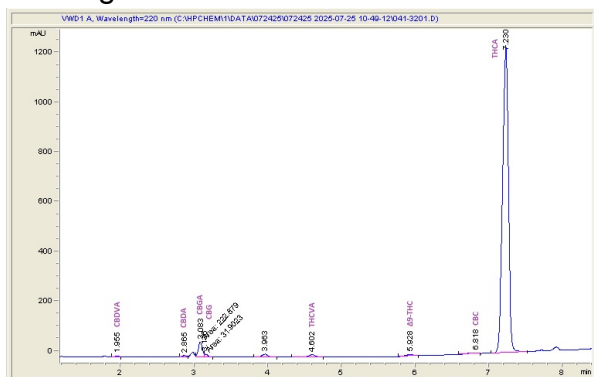
Sample Submitted: 07-24-2025; Report Date: 07-25-2025

Super Silver Haze

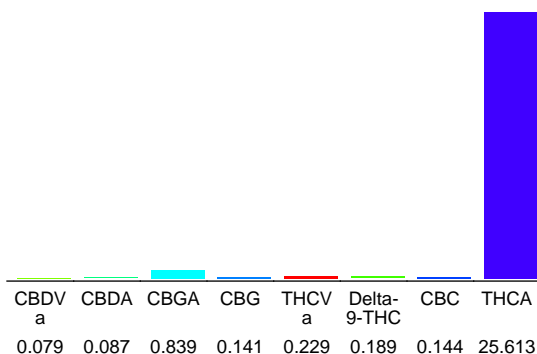
Plant Material: Hemp Flower

Batch/Lot # SSH18261

## Chromatogram



## Cannabinoid Profile



## Cannabinoid Profile by HPLC

0.19%

Delta-9-THC

0.00%

CBD

27.32%

Total Cannabinoids

Cannabinoid	% wt	mg/g
CBDVa	0.079	0.79
CBDA	0.087	0.87
CBGA	0.839	8.39
CBG	0.141	1.41
THCVa	0.229	2.29
Delta-9-THC	0.189	1.89
CBC	0.144	1.44
THCA	25.61	256.13
<b>Total Cannabinoids</b>	<b>27.32</b>	<b>273.2</b>
<b>Calculated Total THC</b>	<b>22.65</b>	<b>226.52</b>
<b>Calculated CBD Yield</b>	<b>0.08</b>	<b>0.76</b>

Calculated Total THC = Delta-9-THC + 0.877 \* THCA

Calculated Maximum CBD Yield = CBD + 0.877 \* CBDA

Marin Analytics, LLC

250 Bel Marin Keys Blvd, Suite D4  
Novato, CA 94949

833-321-TEST / info@marinanalytics.com

Mike Clemmons  
Lab Manager